

WHAT IS MRULE MANAGER™?

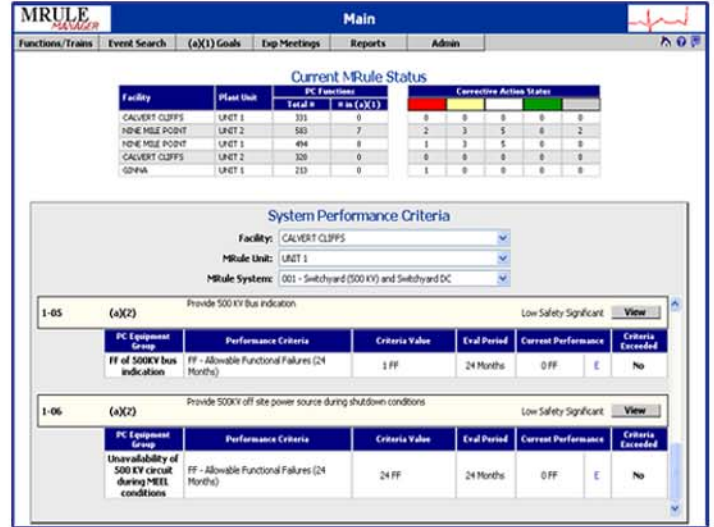
MRule Manager™ is a web-based software application designed to facilitate the management of a Maintenance Rule Program. It has been designed to satisfy legal requirements described in 10 CFR 50.65 and the Industry implementation guidelines. It is also designed to integrate with applications supporting System Health and Maintenance Basis. MRule™ has the ability to support a site or fleet of sites in a single instance, to share data through a web-based interface, and to produce performance indicators to measure results and effectiveness of the program.

Features/Benefits

- Function Scoping
- Performance Criteria
- MPFF Tracking
- Unavailability Tracking
- (a)(1) Action Plans
- Web Based
- Easily Implemented
- Minimal Training
- Powerful Reporting
- Manage Multiple Sites

MRULE MANAGER SCOPE

The scope of MRULE Manager™ consists of the following: complete documentation of Maintenance Rule Program at Nuclear stations, determining and tracking performance criteria, integrating and disposition performance events, identifying criteria exceedance, setting MR Status and tracking (a)(1) related corrective actions and goals, documenting EP Meetings and Minutes, and Reporting Program performance and other information. All data is stored in a centralized database for historical reporting and trending.



INTEGRATION WITH ER SUITE

MRULE Manager™ is designed to integrate with other Equipment Reliability Processes and Tools. This includes System Health Reporting (SystemIQ), Component Health Reporting (PlantIQ), IQ Review, Maintenance Optimization, and Long Term Planning (LTA Manager). Maintenance Rule data and statuses are easily shared with other departments such as Maintenance, Engineering, and Operations, as well as other applications. As an example, System Health Indicators related to Maintenance Rule can be automated with drill down capabilities into MRULE Manager™ for Performance Criteria Levels, Events, and other information. Relationships between Systems and assigned System Engineers are automatically integrated.

