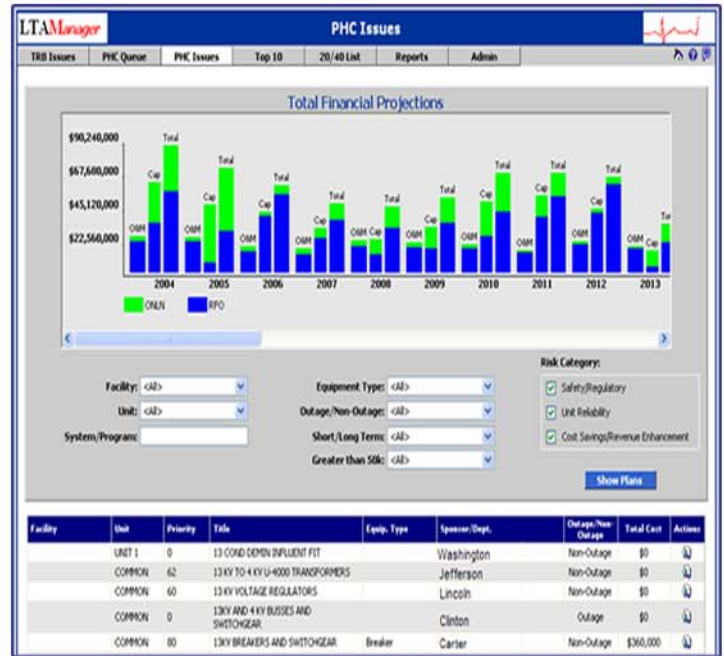


## WHAT IS LTA MANAGER™?

It is a web-based software application that is designed to automate the process of collecting and routing Long Term Asset issues at a site and across an Enterprise. Inputs are automatically gathered from System, Program and Component Health Reporting and integrated with project tracking and financial data. Issues are ranked based on an objective algorithm and efficiently organized to support Plant Health Committees, Top 10 Lists, Outage Planning, and financial forecasting.

### Features/Benefits

- Standardizes Process
- LCM Data Shared
- System/Program Inputs
- Budget/Financials
- Issue Ranking Algorithm
- Web Based
- Easily Implemented
- Minimal Training
- PI Reports
- Manage Multiple Sites



## ISSUE PRIORITIZATION

Issues in LTA Manager™ are ranked by the application of an objective ranking algorithm. The algorithm logic and indicators can be tailored to the process implemented by the customer. Issues are ranked to support the automatic generation of Top 10, Top 20, and Outage lists. Lists can be generated by site or to support fleet integration and optimization. Multiple results for the initiator, review boards and the PHC are stored for comparison.

The screenshot shows a detailed table of issues with columns for Facility, Unit, Priority, Title, Equip. Type, Sponsor/Dept., Outage/Non-Outage, Total Cost, and Actions. The table is filtered to show issues with a priority of 13. The 'Total Cost' column shows values like \$0 and \$360,000. The 'Actions' column contains icons for editing and deleting.

## BUDGET AND FINANCIAL INTEGRATION

In LTA Manager™, it is possible to integrate budget and financial data to long term asset issues. Required Capital, O&M, and other expenses can be tracked with amounts, budget approval status, and other fields. Budget line items can be projected for 5, 10, and even 30 years into the future and support financial forecasting. Graphical displays are available for easy analysis.

