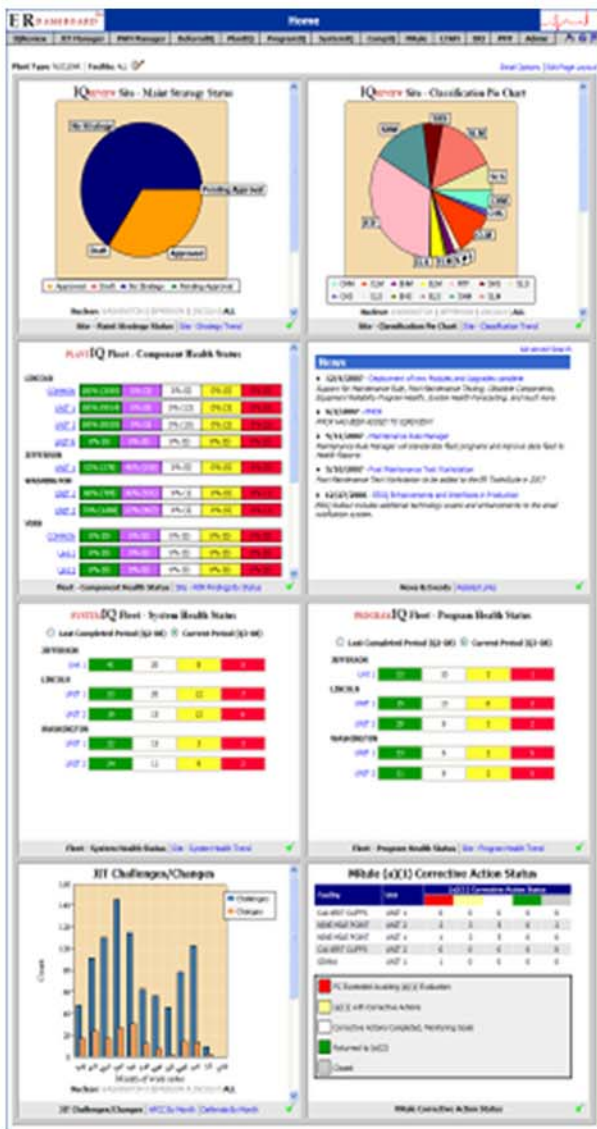


## WHAT IS ERDASHBOARD™?

ERDashboard™ is a web-based application that provides a single interface for measuring Equipment Reliability (ER) program performance. It supports corporate and plant users and integrates information across an Enterprise of sites. ERDashboard™ helps standardize communication and acts as a launching point into supporting ER applications. Users can drill down into supporting applications to view detailed information and to perform specific ER functions.



## Features/Benefits

- Measures ER Performance
- Facilitates Communication
- Integrated PIs
- Integrates multiple sites
- INPO AP - 913
- Highly Configurable
- Easy Navigation
- Single Point of login
- Web based
- Minimal Training

## PERFORMANCE INDICATORS

Performance Indicators (PIs) designed to measure the implementation and effectiveness of each major area of Equipment Reliability are displayed upon login. These are designed to show real-time, integrated data across multiple sites. In many cases, alternate PIs are offered in sub-menus. ERDashboard™ then allows the user to drill down into more detail simply by clicking on the PI. Users may personalize the look-and-feel of the application to display data that applies to them.

## SYSTEM INTEGRATION

The layout and performance indicator content is configurable to each company's needs. ERDashboard™ can display Performance Indicators summarizing any equipment reliability information.

## SINGLE POINT OF LOGIN

The ERDashboard™ application is the only place users need to login to view Equipment Reliability data and perform functions. All other ER applications can be launched from ERDashboard™.